

Optimum

What is OPTIMUM?

OPTIMUM is a fully-fledged enterprise resource planning management system (ERP). It is a document-driven total solution software for the commercial and financial management of many types of businesses. With its powerful parameterization, OPTIMUM is specialized for numerous types of activities, such as retail trade, distribution, real estate, services, financial businesses etc.



for reliability, ease of use, powerful data search, customizable interfaces with many other systems such as financial information providers, data exchange with Microsoft Office applications as well as other databases.



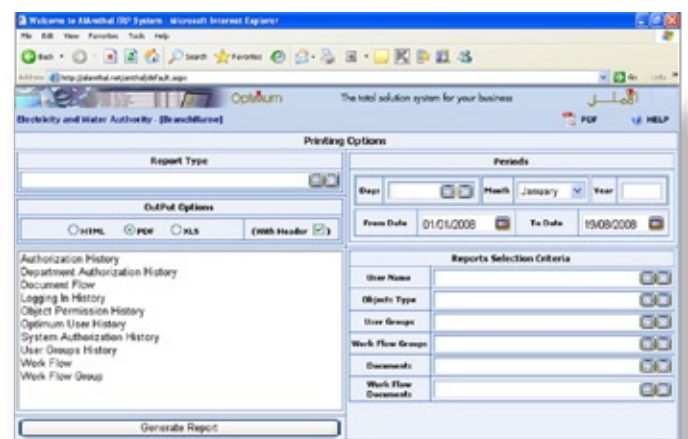
What does OPTIMUM have to offer?

- Background treatment and inter-exchange data of all information between modules
- Fully fledged workflow in each module
- Bilingual Arabic - English: you log on in the language of your choice
- Multi-level access to the system and powerful central security control
- Document printout option upon all task posting
- Extensive MIS reporting (in both languages)
- A modular system whereby the customer purchases only the functions that it needs, at the time when it needs them
- A Gulf-based team to assist you in the use of your system and the expansion of your business.

OPTIMUM offers the most cost-effective bilingual ERP solution to the first-time user, as well as to companies wishing to upgrade their existing total solution systems while availing of the latest technological advancements.

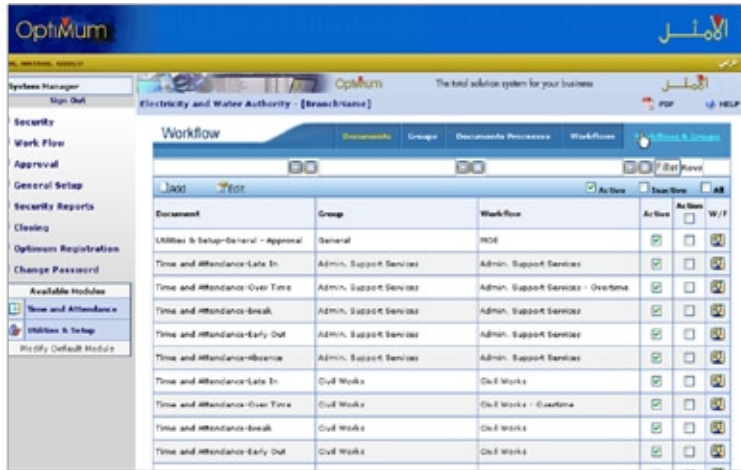
What does OPTIMUM use?

- RDBMS technology for the highest level of data integration, safety and genuine on-line real-time processing, allowing for an immediate control of the company's activities.
- Microsoft Windows interface for total user-friendliness, easy installation and adaptation to most existing systems configurations.
- Browser-based interface for internet/intranet.
- Microsoft SQL Server or MSDES Server



What are the options?

- Single or multi-company
- Single or multi-branch
- Single or multi-profit center
- Single or multi-currency
- Single-user or network setup
- A total integrated solution or the installation of separate modules



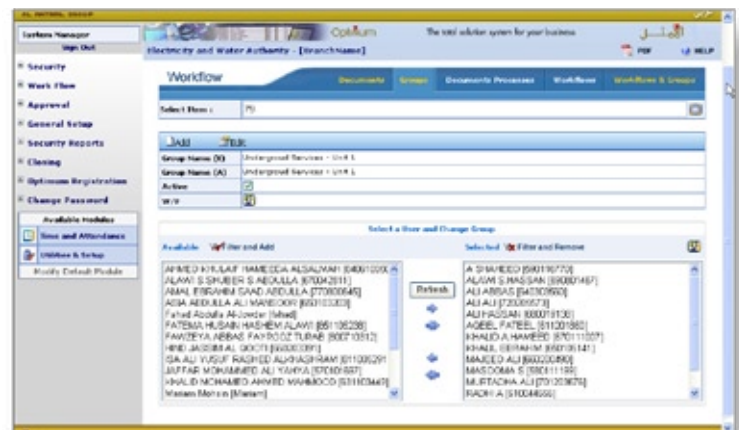
can be printed in whole or topic by topic and when required.



Furthermore, the OPTIMUM system major modules are provided with a detailed manual, offering valuable background accounting information and important tips to get the maximum advantage of your software.

OPTIMUM security features include

- Integrated with Windows Password for highest security level
- Central locking
- User-definable access
- Modular security
- Data stamping
- Audit trail
- Access security (machine, time, user)



Other notable features of OPTIMUM

Greater authority of the system administrator in terms of user management: monitoring of connected users from the server, possibility to disconnect users, sending of messages throughout the network or to individual users. Very high degree of system security and administrative control are ensured through user-defined multi-level approval system and workflows. The user can scan and save physical documents, and attach them with the concerned transactions for instant reference..

System Documentation

OPTIMUM possesses its own online help, which may be viewed or printed from each and every screen, in English or in Arabic. This documentation

